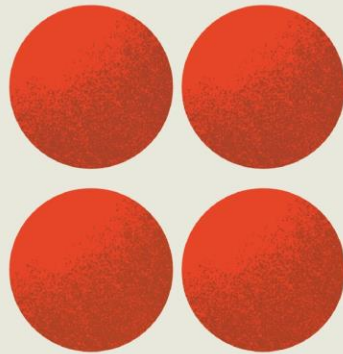
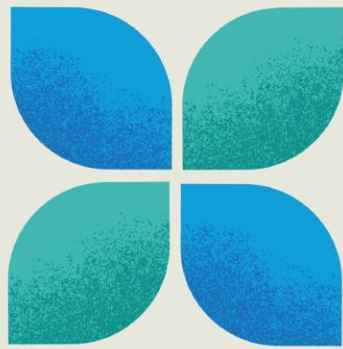
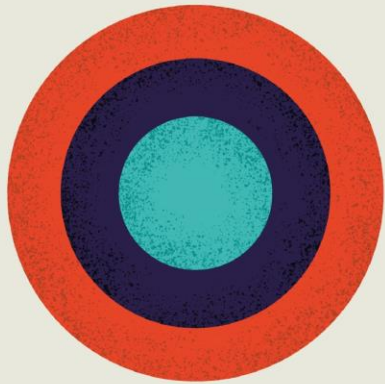
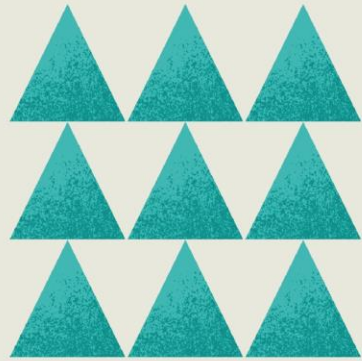


Liverpool
Chamber.



Connect
Support
Thrive



Chamber Events

#WellConnected

Informal networking coffee morning hosted on the first Friday of every month with 80+ business professionals in regular attendance

Executive Receptions

Exclusive monthly high-level networking experiences for Strategic Partners and Patrons. These events offer a money can't buy experience amongst business leaders.

#GrowMySME Workshops

Series of workshops designed for SMEs focusing on topics such as marketing and sales to facilitate growth.

Chamber Socials

Monthly after-work networking sessions hosted in different hospitality venues within the City Centre

Business Networks

Quarterly events focusing on particular industries: School Business Network, Charity Business Network, Property Construction Network, International Trade Club.

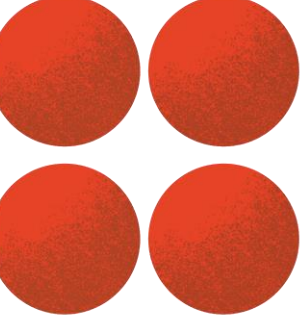
QES Economic Briefing

Panel discussion amongst experts within the LCR about business insights gained from our Quarterly Economic Survey and other prevalent issues.

***Members get FREE entry to all of these events**



WELL CONNECTED DECEMBER 2022.



Flagship Chamber Events

Liverpool International Tennis Tournament

Enjoy the summer sunshine with a day out to the Liverpool International Tennis Tournament. Members get access to discounted hospitality tickets.

Chamber Day at Aintree Races

Grand National Thursday hosts the largest corporate gather over the 3 days of racing – with over 400 attendees. Join us for Premium Hospitality as members get access to discounted tickets.

*Partnership opportunities are available.

Innovation in Business Awards

The Chamber's annual awards celebrates businesses and individuals who have driven their organisation forward throughout the year. Members enjoy discounted tickets and an exclusive hospitality package.

*Sponsorship opportunities are available.

CHAMBER DAY AT THE RACES

Marketing / Promotion

Website

All articles, campaigns, and events can be sent to our editorial inbox for publication on our website. With over 66k unique annual website visits, the website is a great way to promote your news and events.

Members can also feature in our online [Member Directory](#).

E-Newsletter

The weekly newsletter is published every Wednesday to over 3,500 subscribers. With over a 20% average open rate and 6% average click rate, the newsletter is a fantastic platform to feature press releases, events and member offers, as well as staying informed of the Chamber's activity. Please send requests to our editorial inbox.

Social Media

We have a reach of over 40.5K followers across Twitter, LinkedIn, Facebook, and Instagram, allowing us to amplify your messages. Our platforms are constantly growing, and we love to platform our members. We politely ask members to request social posts on our platforms via our editorial inbox.

Well Connected Magazine

The quarterly Well Connected magazine offers Strategic Partners and Patrons another outlet to platform their activity. Digital and physical copies are sent to members, and there are opportunities for editorials.



*Members can submit their content by contacting editorial@liverpoolchamber.org.uk



Insights and Expertise



Advocacy & Policy

As the authentic voice of business, we can feedback to government and local authorities on business concerns through surveys, meetings and events, translating them into powerful campaigns.

Our key policy areas include: Regeneration, Net Zero & Clean Growth, Skills & Employability, International Trade, Infrastructure, and Access to Finance & Funding. Speak to our [policy team](#) about your business challenges or to help us to shape policy.



International Trade

Our international trade department offers a wide range of trade support services including export documentation, accredited International Trade Training, bespoke training and guidance around funding.

Members can join our quarterly International Trade Club or access up to 50% off export documentation. Contact elena.enciso@liverpoolchamber.org.uk for more information.





Join the thriving business community of 500+ members today!

Sign up [here](#) to get started

Liverpool Chamber Member

- Charity / Association Membership:
£275 + VAT
- SME Membership 1 – 10 employees*:
£350 + VAT
- SME Membership 11 – 24 employees:
£450 + VAT
- SME Membership 25 – 49 employees:
£650 + VAT
- SME Membership 50+ employees:
£995 + VAT

* Sole traders get promotional rate of £195 + VAT for first year

Member Benefits

- Member directory listing.
- Member discount on selected events (Aintree, International Tennis Tournament, Annual Awards) and access to free networking events.
- Subscription to Quarterly Magazine.
- Use of Chamber Logo.
- Ability to feature press releases and events across Chamber's platforms – website, weekly e-newsletter, relevant social campaigns
- Access to full calendar of events including; Well Connected, Chamber Social, Business Networks, Quarterly Economic Breakfast Briefings, International Trade Club.
- Use of Chamber Business services:
<https://www.liverpoolchamber.org.uk/member-savings/>

Strategic Partnership & Patronage

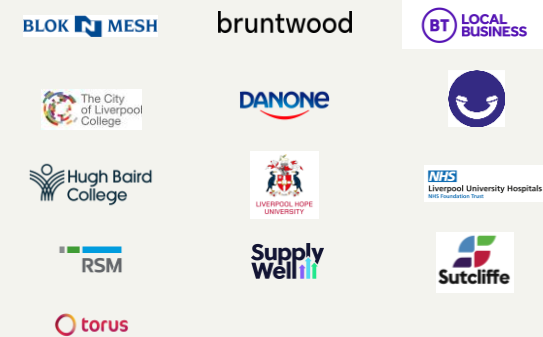
Strategic Partner: £3,000 +VAT

- Managed by a representative of the leadership team and the business growth and membership manager
- Visibility and community development across 3,000 members and businesses
- Bespoke partnership programme for 12 months
- Engaged in senior advocacy and communications
- Opportunity to be featured in each Well Connected magazine

Patron: £6,000 +VAT

- Managed by the executive office (Chief Executive and Policy Officer)
- Bespoke plan created with leadership team at Liverpool Chamber
- Invited to join the policy committee
- Invitation to speak at individual events
- Invitation to join the Chief Executive and board chair at bespoke events
- Opportunity to create and co-deliver event programmes that are relevant

Chamber Patrons



Strategic Partners



Testimonials

The logo for E & P Services is a white circle containing the text 'E & P Services' in a green, sans-serif font.

E & P Services

The chamber has enabled me to raise the profile of E & P Services and given my team the chance to meet a number of new businesses. I regularly recommend non-members I meet to Jordan at the chamber and encourage them to get in touch in the first instance or attend a forthcoming event. The annual membership fee is such good value and the monthly meetings are always held at different locations across the city which adds to their attractiveness

It was through the chamber initially that we made links with LJMU and assisted them with their student internship programme on three separate occasions, I would recommend internships to any local business thinking about getting involved.

David Du-Feu - Director

The logo for Lexus Liverpool is a white circle containing the Lexus logo (a stylized 'L' in a circle) followed by the word 'LEXUS' in a bold, sans-serif font. Below this, the word 'LIVERPOOL' is written in a smaller, sans-serif font.

LEXUS

LIVERPOOL

We started working with Liverpool Chamber in 2022 to help raise our profile in Liverpool and the wider city region. From helping generate awareness of our events to delivering personal referrals being a chamber member has delivered tangible increases to our bottom line and assisted with our goal in becoming a consideration for more business and private customers alike in Liverpool City Region.

We have benefited from being introduced to some fantastic local businesses who we partnered with through 2022 and into 2023 for events and indeed we were proud to support the Innovation In Business Awards in 2022. If you want to connect with a fantastic team that will assist with your business growth plans with a personal and professional touch then Liverpool Chamber is the organisation to join.

Matthew Hine – General Manager